

# CSC Series



## High Voltage Single Conductor Shielded Connectors

### Features:

- Corona Free Tapered Interface
- Operating Voltage  
15 KVDC or 5 KV RMS
- Temperature Range  
-55°C to +150°C
- Sea Level to 70,000 ft. Operation
- Space Saving Design
- Reliable Performance
- Vibration and Shock Resistant
- Radiation Resistant

### Typical Applications

- Electronic Countermeasures
- Radar
- CRT Displays
- Traveling Wave Tubes
- Lasers
- High Voltage Power Supplies
- Medical Applications
- Head-up Displays
- Scientific Instruments

**Connectronics**  
Corp. Interconnection Specialists



Corporate Office  
& Manufacturing Facilities:  
2745 Avondale • P.O. Box 3355  
Toledo, Ohio 43607

Phone: 419-537-0020  
Fax: 419-537-0007  
E-mail: [info@connectronicscorp.com](mailto:info@connectronicscorp.com)  
Visit Us On Our Web Site @  
[www.connectronicscorp.com](http://www.connectronicscorp.com)

## DESCRIPTION:

THE CONNECTRONICS CSC SINGLE CONDUCTOR, SHIELDED, HIGH VOLTAGE CONNECTOR SERIES OFFERS MAXIMUM HIGH VOLTAGE OPERATION IN A VERY SMALL SHIELDED DESIGN. THE TAPERED INTERFACE DESIGN INSURES CORONA FREE OPERATION IN EXTREME ENVIRONMENT CONDITIONS. THE CSC SERIES IS EXCELLENT FOR USE WHERE SIZE IS CRITICAL.

## TECHNICAL DATA:

### ELECTRICAL:

VOLTAGE : 15 KVDC OR 5 KV RMS  
MAXIMUM CURRENT : 5.0 AMPS

### ENVIRONMENTAL:

ALTITUDE : SEA LEVEL TO 70,000 FT.  
TEMPERATURE : -55°C TO +150°C  
STORAGE TEMPERATURE : -60°C TO +160°C

### TEST CONDITIONS:

DIELECTRIC WITHSTANDING VOLTAGE : 15 KVDC AT 70,000 FT. ALTITUDE.

### MATERIALS AND FINISHES:

#### PLUG ASSEMBLY:

CABLE: #22 AWG SPC STRANDED CONDUCTOR, WITH A SEMICONDUCTIVE LAYER FOLLOWED BY A PRIMARY SILICONE RUBBER INSULATION, AND AN ADDITIONAL SEMICONDUCTIVE LAYER BENEATH A SPC BRAIDED SHIELD AND A FINAL BLACK SILICONE RUBBER OUTER JACKET.

PLUG INSULATOR: SILICONE RUBBER PER ZZ-R-765.

SOCKET CONTACT: (SIZE 20) MEETS APPLICABLE PORTIONS OF MIL-C-39029.

SHELL, COUPLING NUT & REAR NUT: HALF HARD BRASS PER QQ-B-626, TIN PLATED PER MIL-T-10727.

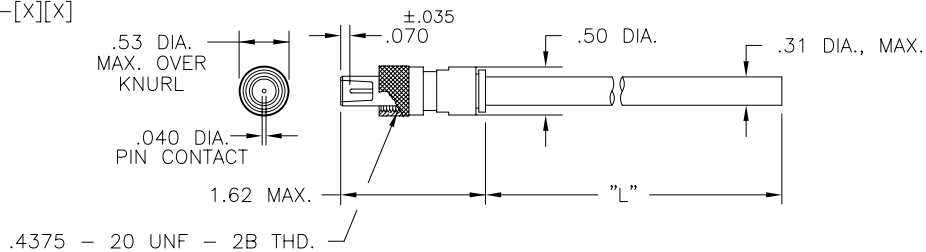
#### RECEPTACLE ASSEMBLY:

PIN CONTACTS: (SIZE 20) HALF HARD BRASS PER QQ-B-626, GOLD PLATED PER MIL-G-45204.

RECEPTACLE INSULATOR: SILICONE RUBBER PER ZZ-R-765.

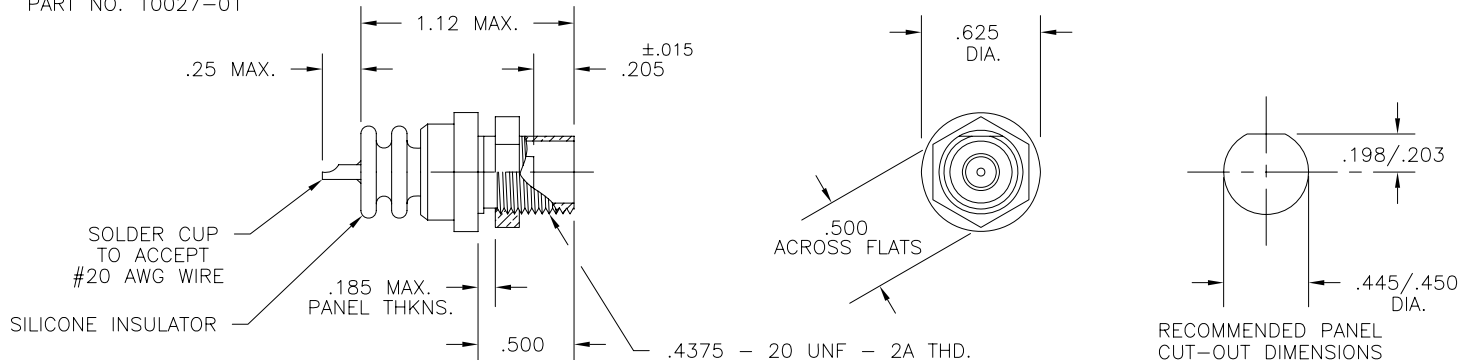
## SINGLE ENDED PLUG ASSEMBLY

BASE PART NO. 10026-[X][X]



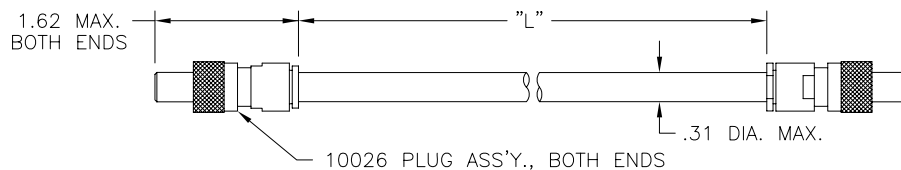
## JAM NUT MOUNT RECEPTACLE ASSEMBLY

PART NO. 10027-01



## DOUBLE ENDED PLUG ASSEMBLY

BASE PART NO. 10281-[X][X]



## ORDERING INFORMATION:

PLUG ASSEMBLIES CAN BE MANUFACTURED TO SPECIFIC NEEDS WITH VARIOUS CABLE LENGTHS ("L"). A VARIETY OF DIFFERENT SHIELD TERMINATION HARDWARE CONFIGURATIONS FOR THE SINGLE ENDED PLUG ASSEMBLY ARE AVAILABLE. RECEPTACLE ASSEMBLIES CAN BE ORDERED AS KITS OR TERMINATED WITH WIRE. CONSULT FACTORY FOR ADDITIONAL INFORMATION.

CONNECTRONICS HAS A WIDE RANGE OF EXTRUDED SILICONE RUBBER INSULATED AND SILICONE RUBBER COATED TEFLON INSULATED WIRE DESIGNED FOR USE WITH ALL CONNECTOR ASSEMBLIES LISTED. PLEASE CONSULT FACTORY FOR ADDITIONAL INFORMATION.

CONNECTRONICS IS THE LEADER IN CORONA FREE HIGH VOLTAGE INTERCONNECTION SYSTEMS.

VISIT CONNECTRONICS ON THE INTERNET @ [www.connectronicscorp.com](http://www.connectronicscorp.com)

**Connectronics**  
Corp. Interconnection Specialists  
Phone: 419-537-0020